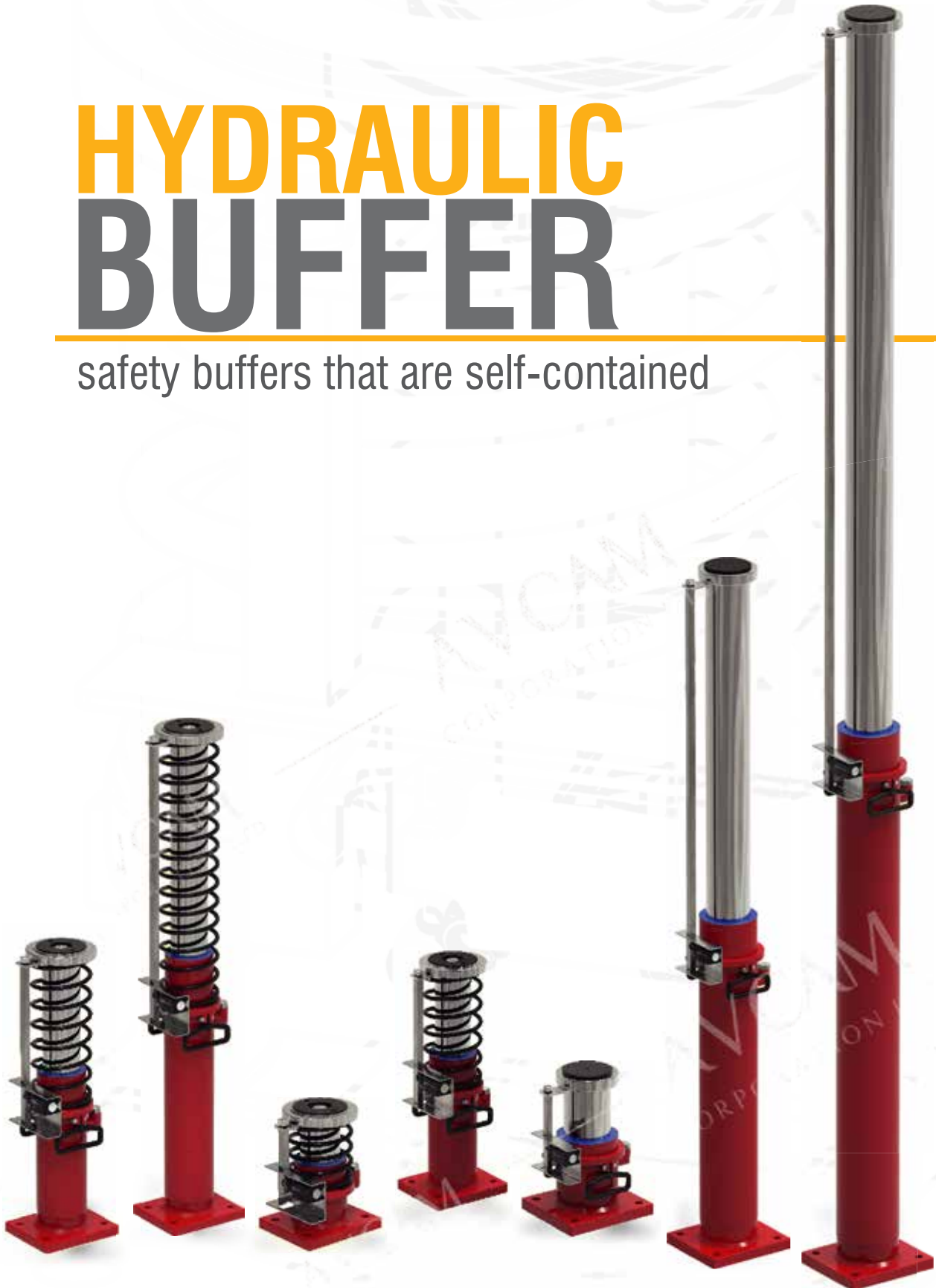


# HYDRAULIC BUFFER

safety buffers that are self-contained



# HYDRAULIC BUFFER

## Description :

Hydraulic Buffers are mainly installed to protect the personnel in the lift as well as for equipment safety. These custom-built hydraulic buffers are manufactured with maximum efficiency and are suited for any kind of impact load and speed. The individually stimulated hydraulic buffers provide optimized performance and smooth deceleration while stroking.

The piston rod when displaced due to impact, it pumps the oil through the orifices and generates oil pressure into the nitrogen chambers. The recoil force then extends the piston rod back to its original state with the compressed nitrogen.

Considered to be the most essential part of the elevator system, the elevator hydraulic buffers reduce the danger that takes place during traction loss or when the rope snaps.

One could assume that hydraulic buffers work as a braking system. The hydraulic buffers prevent the cabin from getting hit during a free-fall. When the counterweight or the cabin is falling down, the hydraulic buffers act as a braking system and stops the cabin from banging hard against the ground.

Different lift structures require different kind of hydraulic buffers which depends on its usage. This means that they vary on the size of the lift and the number of people it can carry at a time.

A V Cam presents the new safety hydraulic buffers that are self-contained, easy to install and require minimal maintenance. The hydraulic buffers can be used by the elevator cars as well as the counterweights. Equipped with electro-mechanical safety limit switches, the switching signals can also be integrated into the elevator control. The rubber plates help in reducing the noise that is created during the impact. The hydraulic buffers' compact designs make it easy to mount them on mostly all kinds of elevators. Plus, they can also be easily altered with another hydraulic buffer of a different make.

## Functions:

- Piston rod gets pushed into the cylinder tube during impact stroke.
- Oil is displaced and pressed into the cylinder jacket with small metering orifices.
- Oil gets accumulated in the outer jacket.
- The gas volume placed above the hydraulic oil is compressed.
- The hard chrome-plated piston rod is sealed.
- Post the release of the piston rod, the compressed gas presses the oil into the cylinder and the piston rod is pushed out again.

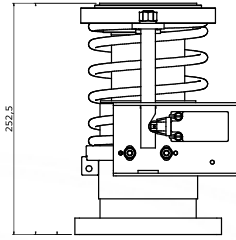
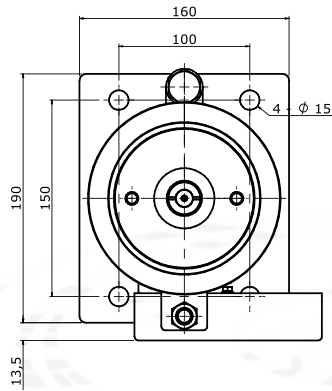
**Piston rod:** hardened, chrome-plated.

**Body:** Powder-coated.

# A V CAM HYDRAULIC (OIL) BUFFER



**HB-70-AVC**



**Max Rated Speed**  
1.0 M/s

**Min Impact Mass**  
600 Kg (1323 lb)

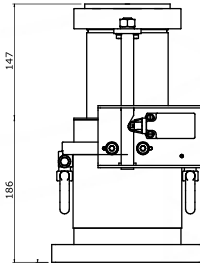
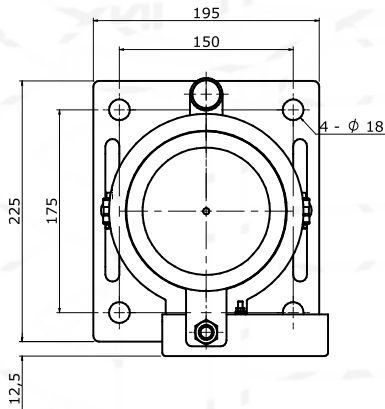
**Max Impact Mass**  
2500 kg (5512 lb)

**Oil Type**  
ISO VG 68

**Oil Quantity**  
0.5 Ltr



**HB-80-AVC**



**Max Rated Speed**  
1.0 M/s

**Min Impact Mass**  
900 Kg (1984 lb)

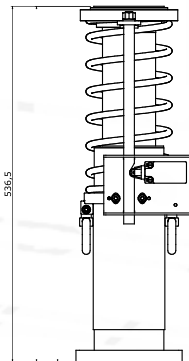
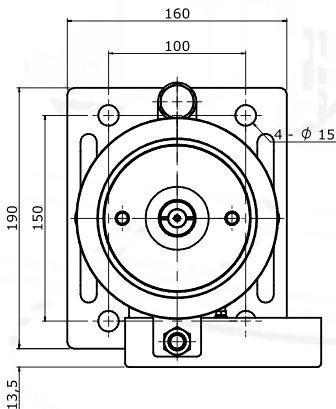
**Max Impact Mass**  
4250 Kg (9370 lb)

**Oil Type**  
ISO VG 68

**Oil Quantity**  
0.5 Ltr



**HB-175-AVC**



**Max Rated Speed**  
1.6 M/s

**Min Impact Mass**  
600 Kg (1323 lb)

**Max Impact Mass**  
4545 Kg (10020 lb)

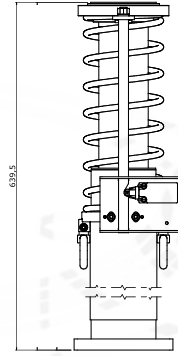
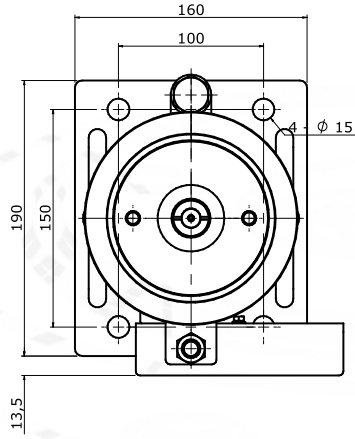
**Oil Type**  
ISO VG 68

**Oil Quantity**  
1.2 Ltr

# A V CAM HYDRAULIC (OIL) BUFFER



**HB-220-AVC**



**Max Rated Speed**  
1.8 M/s

**Min Impact Mass**  
600 Kg (1323 lb)

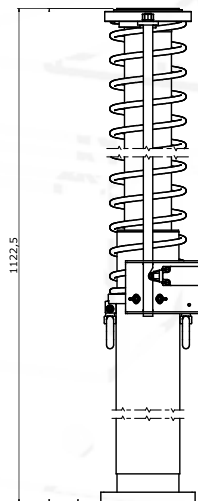
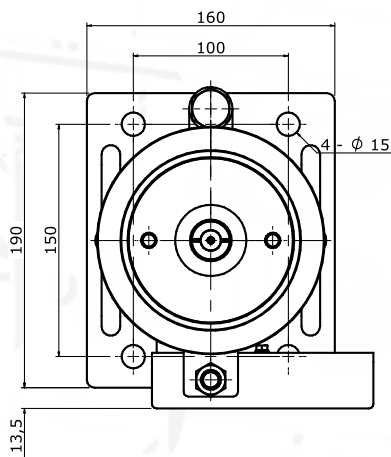
**Max Impact Mass**  
4545 kg (10020 lb)

**Oil Type**  
ISO VG 68

**Oil Quantity**  
1.27 Ltr



**HB-435-AVC**



**Max Rated Speed**  
2.54 M/s

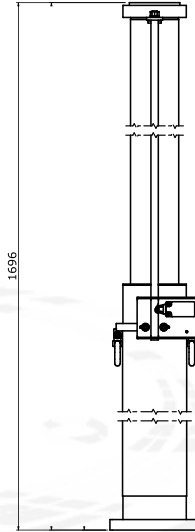
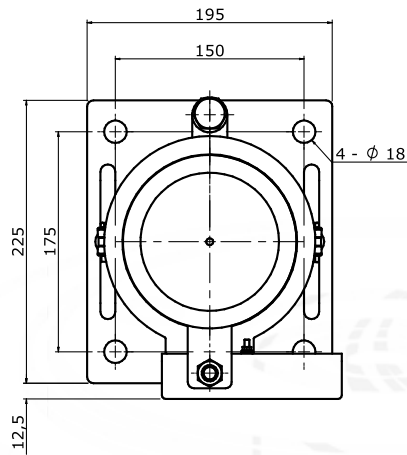
**Min Impact Mass**  
600 Kg (1323 lb)

**Max Impact Mass**  
4545 kg (10020 lb)

**Oil Type**  
ISO VG 68

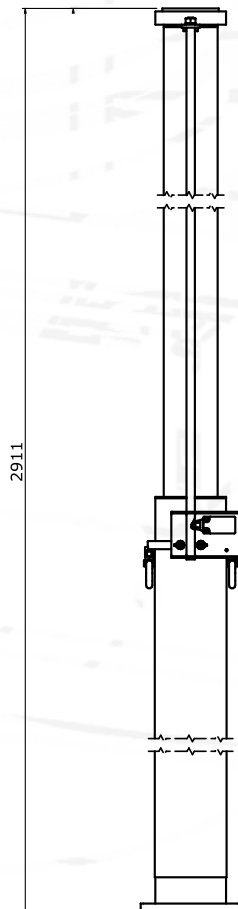
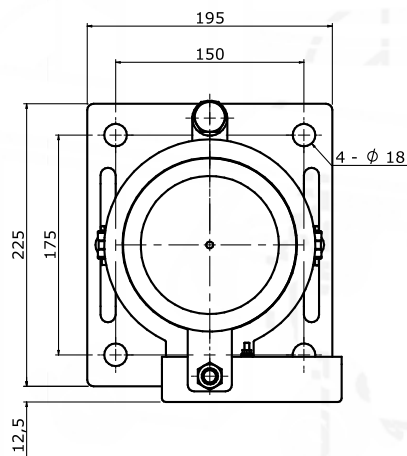
**Oil Quantity**  
2.45 Ltr

# A V CAM HYDRAULIC (OIL) BUFFER



## HB-640-AVC

Max Rated Speed	3.0 M/s
Min Impact Mass	1000 Kg (2204 lb)
Max Impact Mass	4500 Kg (9920 lb)
Oil Type	ISO VG 68
Oil Quantity	7.5 Ltr



## HB-1080-AVC

Max Rated Speed	4.0 M/s
Min Impact Mass	1000 Kg (2204 lb)
Max Impact Mass	4500 Kg (9920 lb)
Oil Type	ISO VG 68
Oil Quantity	12 Ltr





### Manufacturing Plant & Office

Survey No. 503, Majara-Talod Road,  
Gujarat State Highway 143, TA. PRANTIJ  
Opp. Kashtabhanjan Petroleum (NAYARA Petrol Pump),  
Dist. Sabarkantha, Ghadkan, Gujarat 383 205.



Location Map

- ✉ info@avcamcorporation.com
- 🌐 www.avcamcorporation.com
- ☎ +91 98250 19838, +91 97651 66169

### Our Virtual Presence



website



facebook



linkedin



instagram



twitter



pinterest



youtube



whatsapp

**Disclaimer :** The data contained within this catalogue is subject to change, errors and printing errors; any liability is excluded. Technical data in particular is subject to change without prior notification. Images are not exact and may contain minor deviations from the original. Unauthorized reproduction or distribution of photos or technical data is prohibited and may result in legal action.